

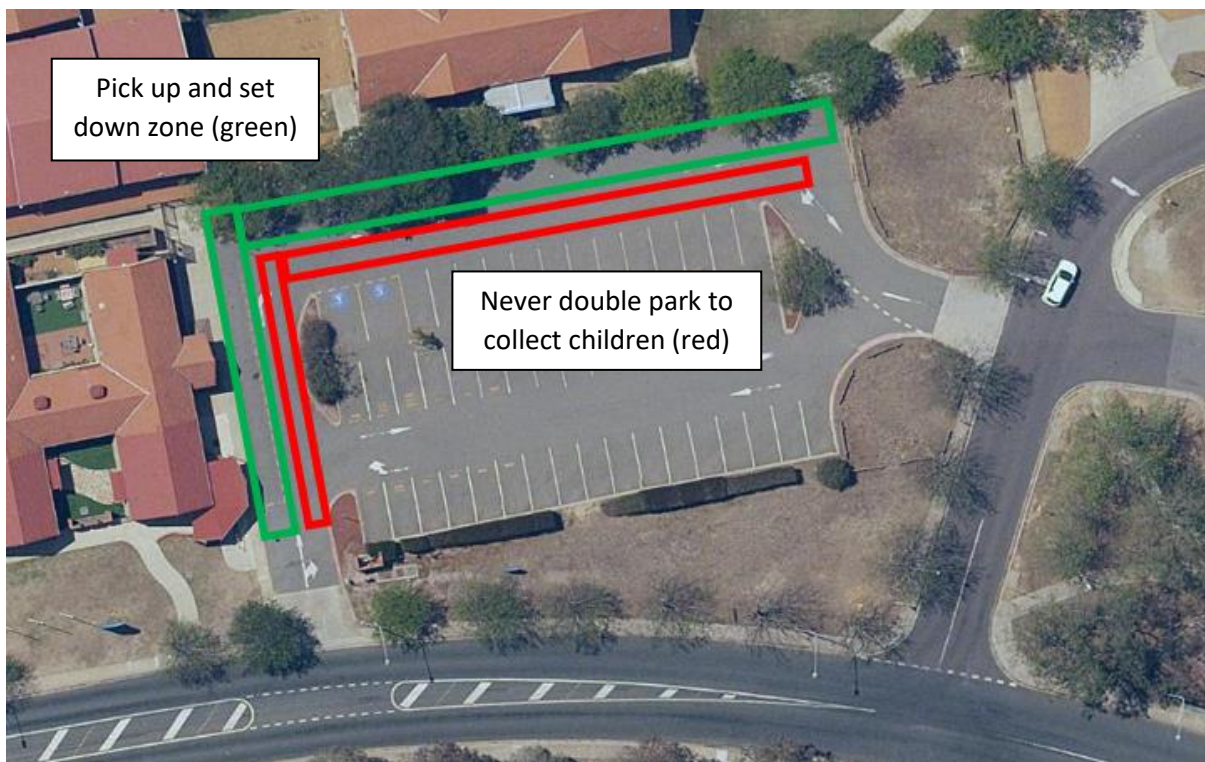
Pick up and set down guidelines

The pick up and set down zone at Florey Primary School is highlighted on the map below (green section). The zone is designed to increase traffic flow by allowing students to be dropped off or collected without motorists needing to leave their vehicle.

To ensure the area operates safely and smoothly, please always follow these guidelines:

- Never park in the pick-up and set down zone, it defeats the purpose of the area as a quick drop-off/collection point. The maximum stay is two minutes and motorists must remain with the vehicle. If you need to park to collect children, use the dedicated parking spaces, the parking at the oval or side streets around the school.
- Please do not wait in the pick up and set down zone if your child/ren aren't ready to be collected. Simply do a lap and re-enter the carpark via Ratcliffe Crescent.
- Never double park adjacent to the pick up and set down zone (area highlighted by red), it creates an unnecessary safety risk for children.
- Drive very slowly through the car park (max 10km/h) and be alert for children at all times.
- Children should have their bags and other items readily available and always enter the vehicle directly onto/from the footpath, not the road.
- Children can be dropped at school between 8:30-9:00am. By dropping children closer to 8:30am, you will help to reduce and avoid congestion.
- Be patient and courteous when driving near the school.

Fines for parking in a pick up and set down zone or for double parking start from \$120.



Please always follow these guidelines to keep our school community safe.